

August 2022

Mt. Hope Lutheran Church, Bloomington, MN

For God is working in you, giving you the desire and the power to do what pleases Him. Philippians 2:13 NLT

We trust that the Lord is giving us the desire to live for Him in all that we do, here at church and all throughout the week as we live as salt and light in a dark lost world.

I need to begin this note with joy and some sadness as well. I trust that you have heard that our most capable childcare and preschool director, as well as our church's administrative assistant, Kim Woebke has accepted a call to teach at Trinity Lutheran School in Waconia. We are filled with joy for Kim as she can return to her passion of classroom teaching; but of course, sad to see her leave the Mount Hope family, although no one ever actually leaves the family. We will look forward to seeing Kim and her family whenever our paths cross.

You may not be aware, but this call and the timing of the call came up rather quickly, so at this point we do not have a set date for officially saying goodbye. We will work with Kim to schedule a Sunday, hopefully in August, where we can send her off with our and the Lord's blessings, while also thanking her for her many years of dedication and service. In the meantime, thank you Kim, Tim, Kevin, Claire, and Olivia for all you have done here for the Kingdom!! We will miss you!

It's just a little over six weeks until we begin another programming year here at Mount Hope. I hope that you are praying for the person(s) you plan to invite to Back to Church Sunday, September 11. It is a wonderful time to be the church! Remember, the goal is that we will have to set up overflow seating in the narthex.

On Sundays, our worship time will continue to be at 9:30, followed by fellowship from 10:30-10:45 and then our Connecting Hour 10:45-11:45 for all ages.

Excitement and anticipation are growing as we near Fall. Remember, we are expanding our Friendship Center here at Mount Hope! We have our International Friendship Center, and we plan to expand with a focus on older adults. Imagine Mount Hope to be the "go to" community center in Bloomington. Our first gathering will be Wednesday, September 14 from 9:00am – 1:00pm including a lunch. We will be sharing more details in the coming weeks.

I share these statistics again because they are significant and important for us to think about who many of our neighbors are. According to many sources, such as, ALOA (Adult Lutherans Organized for Action), 10,000 people in the United States turn 65 each day. This pattern will continue for the next 20 years. Also, this demographic is often neglected and overlooked. The potential is great for us to bless our Friends and Neighbors, as well as our own Mount Hope family.

Please pray for the Friendship Center and our older adult ministry! There will be much more information coming in the weeks leading up to September 11. Contact me if you'd like to be a part of our Friendship Center ministries. It's an exciting time to be here at Mount Hope, Where Guests become Friends and Friends become Family.

Your friend, Pastor Fran Green

Activities and Events

Tuesdays at Two

Conversation and coffee is now at Mt. Hope during the week-Tuesdays at 2! All our neighbors are invited; we will specifically begin with invitations to the folks as Applewood Pointe and Penelope Apartments our closest neighbors. Imagine Mount Hope to be THE Friendship Center of the Twin Cities. How will you be involved in

Tuesdays at Two?

Book Club

First Friday Book Club will meet on Friday, August 5th at 1:30 pm at Renata Melby's home at 10727 Zenith Ave S, Bloomington. July's book to discuss is DINNER WITH THE SMILEYS is a well written biography of a Naval officer's family coping with a year long separation. Come and enjoy root beer floats and we will catch up on our lives and relax.

LifeLight Bible Study

LifeLight Bible Study will begin in September with the study of Genesis – Part 2. New members are welcome to join the class. We meet each Thursday at 10:00 a.m. in the Church Library/Adult Education Room. If you are interested in attending, please contact either Candy Frein at (952) 250-9826 or Harriet Buelow at (952) 888-0392 by August 15th.

Women of Hope Meeting

The next Women of Hope meeting will be on Tuesday, August 23rd at 12:30 pm. If you would like to take a more active role at the church you are welcome to come to these informative meetings.

Fall Bazaar

The 2022 Harvest Bazaar date has been scheduled for Saturday, October 15, 2022.

Begin saving your 16oz containers, specifically cottage cheese, salsa or chip dip (not kool whip or yogurt, please). Darlene Wendt needs thirty (30) of them before October.

No taking applications for Craft Vendors. A table is \$40 to reserve. Please contact Carrie at 612-385-4640 for more info.

Audio Assisted Hearing Devices

Did you know Audio Assisted hearing devices are available for you during church services? The hearing device is worn around your neck and has a mic that attaches to one ear. The volume can be turned up or down for your convenience. The neckloop goes around your neck and the earpiece is placed over one ear. Stop at the tech booth in the sanctuary if you would like to try one out this Sunday!

School Supplies for Shoeboxes

School supplies for crayola crayons are .50 cents and crayola markers are .99 cents at Target and Walmart. We need 50 of each! Stock up now for our Shoebox drive coming this fall with these low, low prices.

LWML Fall Rally-Save the Date-Saturday, October 8, 2022

The LWML Fall Rally “The Wrinkle Free Woman” is going to be held at Holy Cross Lutheran Church in Prior Lake on Saturday, October 8. Save the date for this theme concentrating on salvation (whiter than snow) and keeping clean and holy lives. Our morning together with women from the southwest and Minneapolis metro begins at 9:00am-enjoy coffee and baked goods, followed by a total of 3 learning stations. 3 mission offerings and collections will be taken: bring a roll of quarters (\$10), bring offerings for Mites and an offering for the LWML District Fund. Lunch will be served for shared time of fellowship. Tickets will be on sale in September. I hope that you will *walk with us in newness of life*. (Romans 6:4) – SW Suburban Zone President, Jennifer Adamek



Directory Changes (Please make these changes in your Member Directory)

Betty Weberg

New Phone Number
952 500 8853

Marlys Herman

Prairie Bluffs Senior Living
10300 Hennepin Town Road, Apt 321
Eden Prairie, MN 55347

Mount Hope Preschool and Childcare Update-August 2022

Summer is coming to an end and preparations are underway for the coming school year. The 2022-23 school year will look a little different from previous years. Due to an industry-wide staffing shortage we will be reducing our student count and staff size this school year. Heather and Melanie, who have been teachers at the Center for many years, will be taking over the administration of the Center along with continuing to teach.

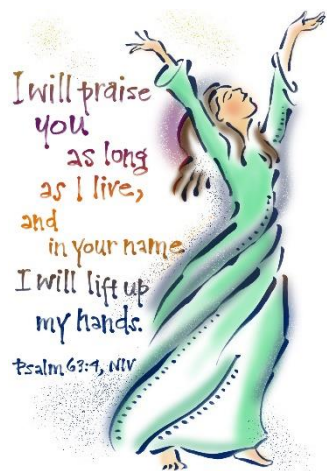
After much prayer and discussion with my family, I have taken a new call to Trinity Lutheran Church and School in Waconia. I will be teaching middle school as I did at the start of my career. I am excited to be returning to the classroom, but will miss Mount Hope deeply. Thank you for all the care you have shown my family over the past eighteen years. Please pray that the transitions taking place go smoothly and according to God’s will.

Thank you for your support of the Center. We truly are reaching our friends and neighbors!

Kimberly Woebke

PRAISE - Part 1

In an article by Dr. Michael Youssef, president of Leading the Way Ministries, he posed the question: If you were to ask Isaiah, “*What is your life’s purpose?*,” he would answer, “*That I might proclaim God’s praise.*” Or, what if we asked Peter or Paul; what would they say? Dr. Youssef shares four ways that praise renews us.



1. *Praise reveals our true spiritual condition.* Jesus says in Matthew 12:34 “The mouth speaks what the heart is full of.” So, praising lips are in direct proportion to a believing and trusting heart.
2. *Praise reinforces our personal destiny.* Sometimes the struggles of the world can cause us to lose sight of our true destiny. As God’s praise becomes more prominent in our lives, we are lifted up.
3. *Praise reestablishes God’s reign in our Heart.* By praising God, we offer Him an invitation to reign and rule in our lives. Further, by praising God, we are saying that He is our King and ruler.
4. *Praise reinforces our relationship with God.* Praise allows us to be realistic about our shortcomings. But, more importantly, it gives us a deep appreciation for the grace of God, and hopefully motivates us to serve Him all of our days.

While I had not truly thought of any of these when I have praised God, it has caused me to ask, as Pastor Fran posed in one of his sermons, “*Where am I?*,” and to ask further “*What is my life’s purpose?*” Now I’ll pose the question, “*What is your life’s purpose?*” Think on it.

Blessings, and **Praise His Name!** Part 2, next month will be about prayer.

Fran Wallin

Prayer Chain Ministry

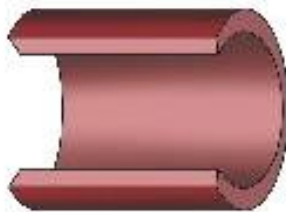
Keep doing the things you love.

Catch health problems before they go too far.

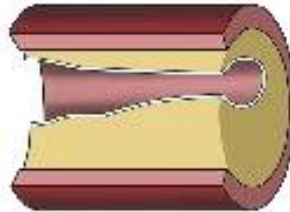
Life Line Screening offers a 5-screening package to provide peace of mind or early detection for risks of stroke and cardiovascular disease. The combination of these tests helps detect problems—**before you have symptoms** and while you and your doctor can still take action...so you can keep doing the things you love.



Plaque buildup can lead to cardiovascular disease, stroke and aneurysms.



A normal artery allows blood to flow through easily.



Plaque buildup in the arteries reduces your blood flow and can be dangerous if left untreated.

Register now to check the health of your arteries

5 Important Screenings for Only \$149 (Special Package Pricing)

- Carotid Artery Screening (Plaque)
- Heart Rhythm Screening (Atrial Fibrillation)
- Abdominal Aortic Aneurysm Screening
- Peripheral Arterial Disease Screening
- Osteoporosis Risk Assessment

Join the **10 million people** who have been screened.
We are coming to your neighborhood.

When: September 1, 2022

Where: Mount Hope Lutheran Church

To register for your appointment and to receive the special discount, please call toll-free **877-754-9648** or visit LLSA.SOCIAL/HS

Screening results are provided to you in about 14 days. We direct all participants with abnormal results to take the report to their physician. Appropriate modification of risk factors (including high blood pressure, smoking, heart disease, diabetes and poor diet) is also necessary for cardiovascular disease prevention. Our screenings cannot detect all forms of stroke risk or cardiovascular disease. All tests are for screening purposes only. You should consult with your personal physician regarding your screening results. Price does not include any applicable review fees. Insurance Note: Life Line Screening does not participate in the Medicare program and the cost of our screening services is not covered or reimbursable by Medicare. Life Line Screening does not file insurance claims nor provide referrals to any physician's group or hospital. If you are unable to attend the screening for any reason whatsoever, we will issue a gift card for the full amount to be used by you, or anyone you choose, for future screening services.

Mount Hope Celebrations in August 2022

Birthdays

1 Lyndel Steinborn

2 Karen Isaacs

3 Quinn Rosenlund

4 Nancy Schuett

5 Riyu Brantner

10 Dianne Hayes

11 Kathy Sundseth

13 Jerry Kuhlman

17 Butch Caspersen

20 Carol Tolzin

23 Becky Mittlestaedt

31 Kayla Vogland

Baptismal Birthdays

4 Vance Melbostad

8 Elijah Mack

9 Carl Fox

18 David Killam

19 Dianne Hayes

22 Zeke Green

22 Grayson Schleifer

23 Lyndel Steinborn

24 Silas Green

25 Elizabeth Mack

29 Victoria Frein

30 Peggy Martin

Anniversary

4 Jessica & Wayne Schuett

Coffee & Coffee Clean up: August – Karen Mack

Receptions: August - Faith Alt & Karen Mueller

Altar: August - Christina Brantner

2022 Altar Flowers

Would you like to make a dedication or in memorial of someone special by signing up for Altar Flowers? Altar flower arrangements are placed in front of church to beautify the sanctuary every Sunday.

The 2022 Altar Flower Sign Up Calendar is up on the bulletin board in the information hallway. Please sign up for a date and place your \$30 check, payable to the Women of Hope, in Karen Mack's mailbox in the information hallway. Karen Mack phone number is 952-831-7428 for any questions you may have.

August 7 Garden Flowers

August 14 Garden Flowers

August 21 1. Steve and Kathy Sundseth 2. Bob Tolzin

August 28 Marilyn Nelson

August 2022

Where Guests become Friends and Friends become Family

Mount Hope Lutheran Church Preschool and Childcare

3601 W Old Shakopee Rd Bloomington MN 55431

www.mthopelutheran.org

church@mthopelutheran.org

952 888 5059



Sunday	Monday	Tuesday	Wednesday	Thursday	Friday	Saturday
	1	2	3	4	5 10:00am IFC 1:30am Book Club at Renata Melby's	6
7 9:30am Worship 10:45am Education Hour	8 10:00am IFC 5:00pm IFC	9 12:30pm Women of Hope Meeting 2:00pm Tues@2 8:00pm AA Primary Election	10 10:00am IFC	11	12 10:00am IFC	13
14 9:30am Worship 10:45am Education Hour	15 10:00am IFC 5:00pm IFC	16 2:00pm Tues@2 8:00pm AA	17 10:00am IFC	18 6:30pm Governing Board Meeting	19 10:00am IFC	20
21 9:30am Worship 10:45am Education Hour	22 10:00am IFC 5:00pm IFC	23 12:30pm Women of Hope Meeting 2:00pm Tues@2 8:00pm AA	24 10:00am IFC	25	26 10:00am IFC	27
28 9:30am Worship 10:45am Education Hour	29 10:00am IFC 5:00pm IFC	30 2:00pm Tues@2 5:30pm Preschool Prep Night 8:00pm AA	31 10:00am IFC			

Sunday Worship Schedule

9:30 am In-Person Worship

10:30 am Adult Bible Study

Services Online at

www.mthopelutheran.org/sermons

Phone: 952-888-5059

E-mail: church@mthopelutheran.org

Website: www.mthopelutheran.org

YouTube Channel: Mount Hope

Lutheran Church

Facebook: Mount Hope Lutheran

Church, Bloomington, MN

Mount Hope's Staff

Fran Green

Pastor

pastor@mthopelutheran.org

Christina Brantner

Music Director

music@mthopelutheran.org

Jennifer Adamek

Administrative Assistant-Media

jadamek@mthopelutheran.org

Kim Wuebke

Director of Preschool and Childcare

Administrative Assistant

church@mthopelutheran.org

Sam Killam

Custodian

Mt. Hope Lutheran Church

3601 W Old Shakopee Rd

Bloomington, MN 55431

Address Service Requested

